

Suburb level demographics

CIV creates customised SA2 datamaps to highlight local issues in your local communities.

Suburb level (SA2) data has historically been challenging for decision-makers to access, as datamaps have typically been restricted to the broader Local Government Area (LGA) level. CIV produces customized SA2 datamaps, which clearly show how a health and wellbeing issues may vary within and across suburbs.

Walkability, Alcohol density (accessibility and availability), Access to Areas of Public Open Space, Access to Public Transport are some of the spatial indicators that can be generated at the SA2 level. The Geographic Information Systems (GIS) specialists within CIV create datamaps for the spatial indicators relevant to you and your community. All SA2 datamaps generated are derived from the CIV metadata framework, which comprises five domain and policy areas:

- Healthy Safe and Inclusive Communities
- Dynamic Resilient Local Economies
- Sustainable Built and Natural Environments
- Culturally Rich and Vibrant Communities
- Democratic and Engaged Communities

Place, Health and Liveability program

CIV is part of the Place, Health and Liveability program - established jointly with the University of Melbourne's Faculty of Architecture, Building and Planning, studies neighbourhoods to understand the relationships between built and sociocultural environments and health. Healthy and liveable communities provide the basis for social equity, harmony, economic resilience and environmental and social sustainability. Our work contributes to academic scholarship and aims to inform policies and practices to create healthy liveable communities.

One of our priority areas are to explore the nexus between place, health and wellbeing, with a particular focus on locational disadvantage.

Deliverables

Customised SA2 Maps provided in PDF format. These may be delivered as a single sheet or packaged as part of a suburb profile.

Recent Clients

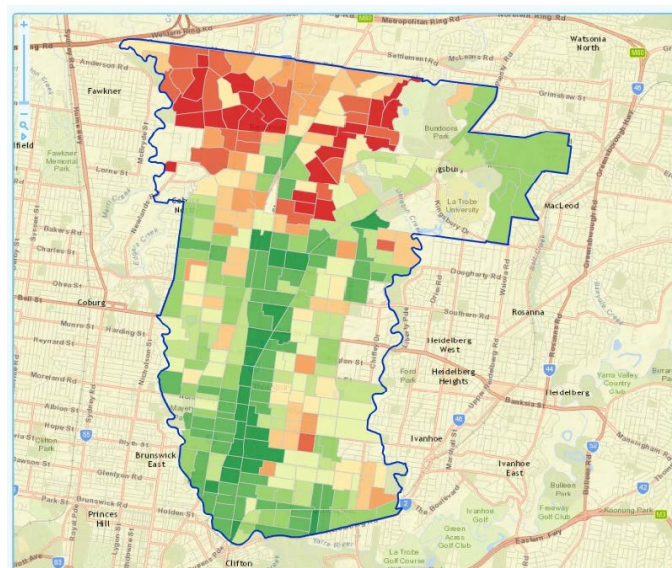
Metropolitan Melbourne Walkability Index

Contact Us

civ-info@unimelb.edu.au

www.communityindicators.edu.au

+61 3 8344 3184



THE UNIVERSITY OF
MELBOURNE

Community Indicators Victoria

